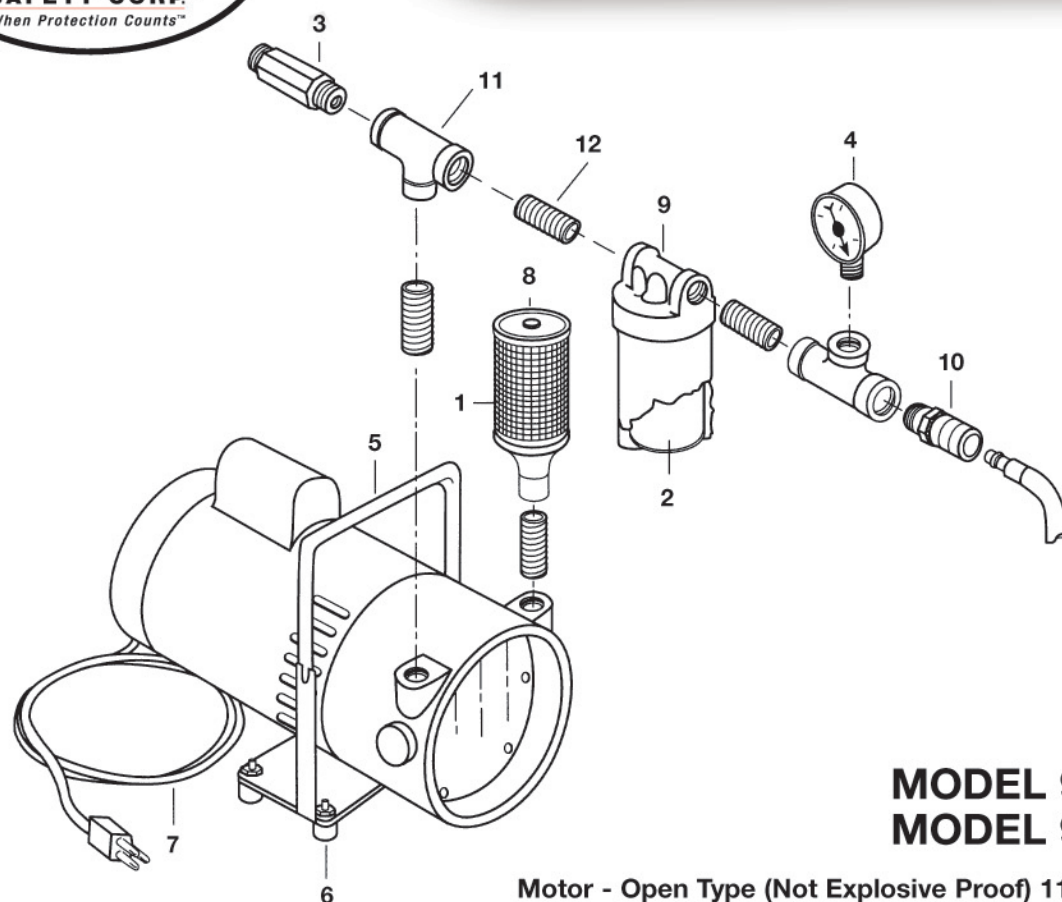




Oil-less Air Pump



9820-00 ONLY

MODEL 9810-00 1/2 HP
MODEL 9820-00 3/4 HP

Motor - Open Type (Not Explosive Proof) 115 V, Single Phase, 60HZ

ITEM	PART#	DESCRIPTION
1	9700-01	Intake Filter Element
2	9700-02	Exhaust Filter Element
3	9700-03	Pressure Relief Valve
4	9700-04	Pressure Gauge
5	9700-05	Carrying Handle
6	9700-06	4 Rubber Ft., w/ Bolts and Nuts
7	9700-07	Electric Cord w/ Ground Plug
8	9700-08	Intake Filter Assembly
9	9700-09	Exhaust Filter Assembly
10	9700-10	1/4" NPT Male Coupler
11	0200-022	3/8" Brass Tee

ITEM	PART#	DESCRIPTION
12	0200-003	3/8" Hex Nipple
	9700-11	Pump Cleaning Solution (Not Shown)
	9700-25	Inlet Hose Kit - 25 Ft. (Not Shown)
	9700-30	Inlet Hose Extenders - 25 Ft. (Not Shown)
	9700-50	Service Kit - Vanes, Filters & Pump Cleaning Solution (Model # 0823-1023) (Not Shown)
	9700-49	Service Kit - Vanes, Filters & Pump Cleaning Solution (Model # 0822-1022) (Not Shown)

WARNING:

Exhaust filter DOES NOT REMOVE dangerous organic vapors or gases. DO NOT USE this equipment if organic vapors or gases are present. If this air pump is to be used as a breathing air source, the air inlet MUST be located in a CLEAN AIR area, where breathable air can be assured at all times.